



Super 40

ACT 1

23 & 24 November 2024

SAILING INSTRUCTIONS

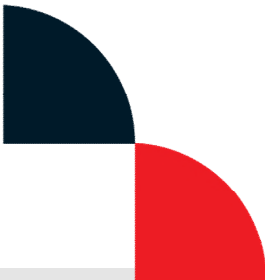


Held in conjunction with the Nautilus Marine Insurance Sydney Short Ocean Racing Championships

www.ssorc.mhyc.com.au



Organising Authority
Middle Harbour Yacht Club
75 Lower Parriwi Road, The Spit
Mosman, NSW 2088
PO Box 106, Seaforth, NSW 2092
P: 02 9969 1244 W: www.mhyc.com.au



SAILING INSTRUCTIONS

1.0 RULES

- 1.1 The Organising Authority for the event is the Middle Harbour Yacht Club (MHYC).
- 1.2 The Race will be governed by;
 - a) the current Racing Rules of Sailing (RRS),
 - b) the current Special Regulations of Australian Sailing (AS),
 - c) the Class Rules of the MC38, Cape 31 and other classes entered in the event,
 - d) the 2024 Super 40 Class Rules
 - e) the 2024-2025 Season MHYC Notice of Race (MHYC NOR),
 - f) this Notice of Race (NoR) and the Sailing Instructions (SI).
- 1.2 The attention of competitors is drawn to the MHYC NOR which are referenced throughout these SIs including their responsibilities under the applicable NSW Maritime legislation.
- 1.3 A boat shall comply with the Special Regulations Part 1 for Category 7. An audited Special Regulations Form for the relevant Category (or higher) shall be submitted with the entry if not already held by MHYC.
- 1.4 The Sailing Office of MHYC shall be the Race Committee ("RC") for the purposes of, and with, the powers and discretions contained in RRS 90.1. This amends MHYC NOR 4.2.
- 1.5 Fixed and retractable spinnaker poles and bowsprits will be permitted for the purpose of setting asymmetrical spinnakers. This amends RRS 50.2 and 50.3.
- 1.6 Boats with movable or variable ballast (within the meaning of those terms in the Special Regulations) may move that ballast for the purpose of changing trim or stability. This amends RRS 51.
- 1.7 RRS 52 is changed so that it does not apply to the adjustment and operation of sails or the adjustment of movable appendages on any boat.
- 1.8 Pennants or decals may be provided by the event sponsors. If provided, pennants shall be flown from the backstay and/or decals shall be displayed on the bow at all times whilst racing. Boats failing to comply with this may be protested by the Race Committee only. This alters RRS 60.1 and 60.3.

2 NOTICES TO COMPETITORS

- 2.1 Notices to Competitors will be posted on the Official Notice Board which is published on [the Middle Harbour Yacht Club website](#).

3 CHANGES TO THE SAILING INSTRUCTIONS

- 3.1 Any change to the Sailing Instructions will be posted before 0830hrs on the day it will take effect except that any change to the schedule of races will be posted prior to 1800hrs on the day before it takes effect.
- 3.2 Any change to the Sailing Instructions made 'afloat' will be indicated by the display of the Third Substitute and accompanied by two sound signals. The change will be communicated on the designated course VHF channel and/or displayed on the committee boat.

4 CREW REGISTRATION

- 4.1 Each yacht is required to provide a crew list via SailSys or confirm the number of POB each day. Failure to register a crew list before the yacht's start time of its first race may result in a score of DSQ without a hearing. This changes RRS 63.1 and A5.1.
- 4.2 To complete the POB Register - [click here](#) To complete a full Crew Registration, go to your yacht's SailSys profile.

5 SIGNALS MADE ASHORE

- 5.1 Signals made ashore will be displayed from the Signal Mast adjacent to the MHYC Starters Box, located in the North-Eastern corner of the Club premises.
- 5.2 When flag AP is displayed ashore, '1 minute' is replaced with 'not less than 60 minutes' in the race signal AP.

6 SCHEDULE OF RACES

6.1 The schedule of racing is as follows:

Saturday 23 November 2024	<i>Seven Islands Race</i>	<i>Inshore Passage Race</i>
Warning Signal	Code Flag G	1155hrs
Sunday 24 November 2024	<i>Passage Races</i>	<i>3 Races Scheduled</i>
First Warning Signal	Code Flag G	1155hrs
Subsequent races will be started as soon as possible		

6.2 No Warning Signal will be made after 1530hrs Sunday 24 November 2024.

7 CLASS FLAGS

7.1 The Class flag will be Code Flag G.

8 RACING AREA

8.1 Racing will be conducted on the waters of Sydney Harbour.

9 THE START

- 9.1 The starting area for the Seven Islands Super 40 Fleet Race on Saturday 23rd November will be in the vicinity of Hunters Bay or The Sound.
- 9.2 The Start Line will be between a staff displaying an Orange flag on the Committee Vessel and the course side of the port-end start mark.
- 9.3 If Flag "Q" is displayed on the Race Committee Vessel at or before the time of the warning signal, the first mark of the course shall be an orange inflatable mark laid a minimum of 0.2nm to windward of the starting line. Boats shall round this mark to Port if a red flag is displayed below Flag "Q", or to Starboard if a green flag is displayed below Flag "Q".
- 9.4 When an orange inflatable windward mark is laid, the second mark of the course shall be the first mark as described in Appendix A.
- 9.5 The starting areas for Super 40 Passage Races on Sunday 24th November are described in Appendix C.

10 COURSES

- 10.1 The Course for Seven Islands Super 40 Fleet Race on Saturday 23rd November is described in Appendices A & B.
- 10.2 The Courses for Super 40 Passage Races on Sunday 24th November are described in Appendix C.
- 10.3 The attention of competitors is drawn to the MHYC NOR 13 and those areas which are designated obstructions and prohibited areas in the vicinity of the Gowlland Bombora, the Sow and Pigs Reef, Circular Quay, Garden Island and Shark Island. A boat shall not sail into a designated prohibited area.

11 THE FINISH

- 11.1 The Finish Line for the Seven Islands Super 40 Fleet Race on Saturday 23rd November will be the Clubhouse Finish Line as per MHYC NOR 17.
- 11.2 The Clubhouse Finish Line is a transit formed by aligning two orange triangles located adjacent to the MHYC Race Official's Box. The transit bears approximately 065°/245° magnetic and is illuminated after dark.
- 11.3 When finishing boats are requested to centre their mainsail in order to assist in the identification of competitors. Boats that cannot be identified may be scored 'DNF'. This amends RRS 63.1.
- 11.4 Boats are reminded of their obligation under RRS 24 to keep clear of boats that are still racing. A boat which has finished that is observed to interfere with a boat still racing or with the operation of the Clubhouse Finish Line may be disqualified. This amends RRS 63.
- 11.5 The Finish Line for the races on Sunday 24th November will be between a staff displaying a blue flag on the Committee Vessel and the course side of the finish mark.

12 TIME LIMITS

- 12.1 The time limit for Seven Islands Super 40 Fleet Race on Saturday 23rd November will be 1700hrs. If the leading yacht finishes within the time limit, then finishes for other yachts will be timed until 1730hrs.
- 12.2 A boat that does not finish within the time limit shall be scored DNF. This amends RRS 35.
- 12.3 Time limits and target times for the Passage Races on Sunday 24th November are as follows:
- | | |
|-------------|-------------|
| Time limit | 120 minutes |
| Target Time | 75 minutes |
- Failure to meet the target time will not be grounds for redress. This changes RRS 62.1(a).
- 12.4 Boats failing to finish within 15 minutes after the first boat finishes shall be scored DNF. This amends RRS 35.

13 ALTERNATIVE PENALTIES

- 13.1 For an infringement of RRS Part 2, the Two-Turns Penalty (RRS 44.2) shall apply.

14 ABANDONED RACES

Abandoned races will not be re-sailed.

15 PROTESTS

- 15.1 Protests shall be submitted on forms available from the MHYC and lodged with or emailed to MHYC (sailing@mhyc.com.au) no later than two (2) hours after the last boat finishes the last race of the day or racing is abandoned for the day.
- 15.2 The Protest Committee will hear protests in the approximate order of receipt as soon as possible.
- 15.3 Protest notices will be published on [the Middle Harbour Yacht Club website](#) within 30 minutes of the end of protest time limit to inform competitors where and when there is a hearing in which they are parties to a hearing or named as witnesses. This notice fulfils the requirements of RRS 61 to notify parties to a protest of the hearing time.
- 15.4 RRS 66 is changed by adding: "On the last day of racing, a party to the hearing may ask for a reopening no later than 20 minutes after being informed of the decision. If the party was informed of the decision on the previous day it shall ask for a reopening no later than the time limit for protests."
- 15.5 In accordance with RRS 64.1(a), for a breach of a rule of RRS Part 2, the Protest Committee may award a disqualification or a time penalty. For all other rules the penalty shall be at the discretion of the Protest Committee which may include no penalty.

16 RADIO COMMUNICATION

- 16.1 Except in an emergency, while racing a boat shall neither make radio transmissions nor receive radio transmissions not available to all boats. This restriction also applies to mobile telephones.
- 16.2 Yachts shall maintain a listening watch on VHF Channel 72 for the duration of the race.
- 16.3 Competitors retiring from the race shall advise the RC on Channel 72 or the Sailing Office by phone 8969 3103 as soon as practicable.

17 PRIZES

Prizes shall be presented at a post-race presentation.

18 RESPONSIBILITY

- 18.1 Competitors participate in the MHYC Feature Race Program at their own risk. Special attention is drawn to RRS Fundamental Rule 3, which states: "The responsibility for a boat's decision to participate in a race or to continue racing is hers alone".
- 18.2 The Organising Authority, Event Sponsors, and their respective officers, employees, volunteers and members accept no liability for any injury, loss or damage that may be suffered by any competitor, and any liability for harm to persons that results from breach of an express or implied warranty that the MHYC Feature Race Program and all services relating thereto will be conducted or rendered with reasonable care and skill is excluded.
- 18.3 Neither MHYC, nor the event sponsors, are responsible for the seaworthiness of a boat whose entry is accepted or the sufficiency or adequacy of its equipment.

APPENDIX A – SATURDAY COURSES

COURSE 1

Seven Islands Race (Approx. 22nm)

Start	The Sound
*	Orange mark (P/S) if 'Q' displayed
1	AS Mark Shark Island (S)
2	Shark Island (S)
3	Fort Denison (P)
4	Goat Island (P)
5	Cockatoo Island (P)
6	Spectacle Island (P)
7	Snapper Island (P)
8	Goat Island (S)
9	Fort Denison (P)
10	Clarke Island (P)
Finish	MHYC

COURSE 2

Five Islands Race (Approx. 21nm / 18nm)

Start	The Sound
*	Orange mark (P/S) if 'Q' displayed
1	AS Mark Shark Island (S)
2	Shark Island (S)
3	Fort Denison (P)
4	Goat Island (P)
5	Cockatoo Island (P)
6	Goat Island (S)
7	Fort Denison (P)
8	Clarke Island (P)
Finish	MHYC

COURSE 3

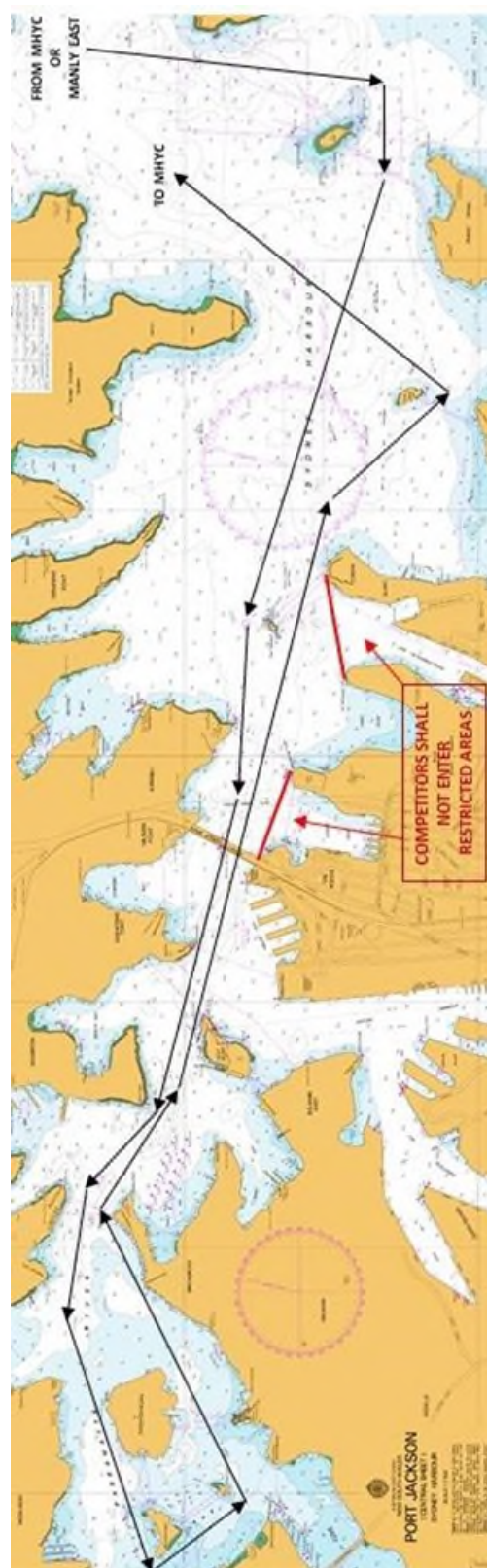
Three Islands Race (Approx. 15nm)

Start	The Sound
*	Orange mark (P/S) if 'Q' displayed
1	AS Mark Shark Island (S)
2	Shark Island (S)
3	Fort Denison (P)
4	Clarke Island (P)
Finish	MHYC

NOTES

1. All Islands are Marks of the Course and shall be rounded (or passed) to port (P) unless a starboard rounding is indicated by the suffix (S).
2. Competitors shall observe all navigation restrictions applicable to Circular Quay and Garden Island.
3. A guide to the course, for illustrative purposes only, is attached to these Sailing Instructions at Appendix B.

APPENDIX B – CHARTLET



APPENDIX C - SUNDAY COURSES

1 THE COURSES

- 1.1 The course number to be sailed will be displayed on a Course Board on the Committee Vessel.
 1.2 All Harbour Marks and Islands are rounded to STARBOARD.
 1.3 Courses will not be changed after the start but may be shortened in accordance with RRS 32.

COURSE	COURSE CONFIGURATION
1 (SW) (12nm)	Start Obelisk Bay – N3 – CP – N3 – Finish Obelisk Bay
2 (S) (13nm)	Start Obelisk Bay – SI – N3 – CP – SI – N3 – Finish Obelisk Bay
3 (S) (8.5nm)	Start Obelisk Bay – SI – N3 – OB – SI – Finish Obelisk Bay
4 (SE) (11nm)	Start Taylors Bay – SI – N3 – GP – SI – TB – SI – Finish Taylors Bay
5 (SE) (8.5nm)	Start Taylors Bay – SI – N3 – GP – SI – Finish Taylors Bay
6 (E) (11nm)	Start Hunters Bay – CP – RP – EB – MW – ME – CP – OB – RP – EB – CP – Finish Hunters Bay
7 (NE) (12nm)	Start Obelisk Bay – CP – N3 – CP – N3 – Finish Obelisk Bay
8 (NE) (7.5nm)	Start Obelisk Bay – CP – SI – N3 – Finish Obelisk Bay
9 (N) (13nm)	Start Obelisk Bay – CP – SI – N3 – CP – SI – N3 – Finish Obelisk Bay
10 (N) (10nm)	Start Obelisk Bay – CP – SI – OB – SI – Finish Obelisk Bay
11 (W) (11nm)	Start Hunters Bay – EB – CP – EB – MW – ME – CP – EB – CP – Finish Hunters Bay
12 (W) (7.5nm)	Start Hunters Bay – EB – MW – ME – CP – EB – CP – Finish Hunters Bay

2 MARKS

Marks are described as follows:

MARKS	MARK DESCRIPTIONS	APPROX. COORDINATES
Start / Finish	Yellow Inflatable Buoy	N/A
CP	AS Mark Cannae Point	Lat. 33-48-847 Lon. 151-16-895
EB	AS Mark Edwards Beach	Lat. 33-49-292 Lon. 151-15-299
GP	AS Mark Grotto Point	Lat. 33-48-987 Lon. 151-16-133
ME	AS Mark Manly East	Lat. 33-48-196 Lon. 151-16-726
MW	AS Mark Manly West	Lat. 33-48-176 Lon. 151-16-625
N3	Naval Mark #3 200m North of Clarke Island	Lat. 33-51-571 Lon. 151-14-537
OB	AS Mark Obelisk Bay	Lat. 33-49-872 Lon. 151-15-923
RP	AS Mark Rocky Point	Lat. 33-49-424 Lon. 151-15-299
SI	AS Mark Shark Island *	Lat. 33-51-626 Lon. 151-15-541
* Note - Boats shall not pass between AS Mark Shark Island and Shark Island.		