

MHYC WINTER SPRINT SERIES

Category 7 / PHS Results / Divisions as Required

SCHEDULE OF RACES

RACE	DATE	RACE FORMAT	SCHEDULED START TIME	INFORMATION
1 & 2	Saturday, 22 May 2021	Winter Sprint Series	1230	MHYC Winter Sprint Sailing Instructions
3 & 4	Saturday, 19 June 2021	Winter Sprint Series	1230	MHYC Winter Sprint Sailing Instructions
5 & 6	Saturday, 10 July 2021	Winter Sprint Series	1230	MHYC Winter Sprint Sailing Instructions
7 & 8	Saturday, 31 July 2021	Winter Sprint Series	1230	MHYC Winter Sprint Sailing Instructions

MHYC WINTER SPRINT SERIES

Category 7 / PHS Results / Divisions as Required

SAILING INSTRUCTIONS

1 RULES

1.1 Refer to NOR 1 & 2.

1.2 Competitors are reminded of the requirement under NOR 13 to pass on the safe water side of all Harbour Cardinal Marks.

2 SCHEDULE OF RACES

2.1 Racing is scheduled as per the Schedule of Races above.

3 CLASS FLAGS & DIVISIONS

3.1 Class Flags for the Winter Sprint Series Races are as follows:

CLASS / DIVISION	FLAG
Division 1	Code Flag 'D'
Division 2	Code Flag 'E'

3.2 Division allocation is subject to the receipt of entries and shall be structured by the Race Committee at its absolute discretion. Allocation to Divisions shall not be the subject to protest or constitute grounds for redress. This amends RRS 60.1 and 62.

4 THE COURSES

4.1 The course to be sailed will be displayed on a Course Board on the CV, preceded by the letter 'W', to indicate the number of roundings of the Windward Mark.

COURSE SIGNAL	DIVISION	COURSE
W1	Division 1	Start – 1a – Finish
	Division 2	Start – 1 – Finish
W2	Division 1	Start – 1a – Gate – 1a – Finish
	Division 2	Start – 1 – Gate – 1 – Finish
W3	Division 1	Start – 1a – Gate – 1a – Gate – 1a – Finish
	Division 2	Start – 1 – Gate – 1 – Gate – 1 – Finish

4.2 All Marks are rounded to PORT except the Gate. If only one Gate Mark is laid, all boats shall round that Mark to Port.

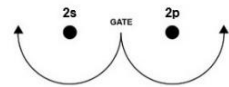
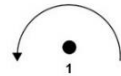
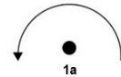
4.3 The race committee may shorten any Course in accordance with RRS 32.

4.4 A course change will be signaled as per RRS 33. Code flag C will be displayed along with a new bearing to the next mark of the course. The new mark will be the same colour with the addition of a Black band. Subsequent legs may be changed without further signaling to maintain the course shape.

5 MARKS

5.1 Marks are described as follows:

COURSE MARKS	MARK DESCRIPTIONS
Start /Finish Mark	Yellow Inflatable Mark
Mark 1 (Windward Mark for Div. 2)	Yellow Inflatable Mark
Mark 1a (Windward Mark for Div. 1)	Orange Inflatable Mark
Gate Marks 2s & 2p	Orange Inflatable Mark/s
Change Mark 1a	Yellow Inflatable Mark with Black Band
Change Mark 1	Orange Inflatable Mark with Black Band



5.2 The bearing to the first Mark from the Start Line may be displayed prior to or with the Warning Signal.

5.3 The Gate will be laid approximately 50m to windward of the Start Line and may be laid after the starting signal.

6 THE START

- 6.1 The start shall be an On Water start in accordance with MHYC NOR 18.
- 6.2 Competing boats shall report to the race committee prior to the Warning Signal each day, on starboard tack with mainsail hoisted, to confirm their intention to race. Boats that cannot be identified prior to their Warning Signal may be scored DNC. This amends RRS 63.1.
- 6.3 The starting line will be between a staff or halyard displaying an orange flag at the starboard end and the course side of the port-end start mark.
- 6.4 Prior to her Preparatory Signal, a boat shall keep clear of the starting line and all boats about to start or which have started. Attention is drawn to RRS 23.

7 THE FINISH

- 7.1 The finishing line will be between a staff or halyard displaying a blue flag at the port end and the course side of the starboard end finish mark.
- 7.2 When the race committee determines the Clubhouse finish line to be used, the race committee will display Code Flag "O". This signal may be displayed at any time with 3 long sound signals. The Clubhouse Finish shall be in accordance with NOR 17.

8 TIME LIMIT

- 8.1 The Time Limit for all boats will be 30 minutes after the first boat in the Division has finished.
- 8.2 Boats retiring from racing shall inform the Committee Vessel by hail or by VHF 72 at the earliest opportunity. Should this be impractical, boats shall advise the Sailing Office, in person or by telephone 9969 1244, as soon as practicable.
- 8.3 If all boats in a class or division are scored DNF, the race committee shall not abandon the race. This amends RRS 35.

9 SCORING

- 9.1 The Low Point System of RRS Appendix A shall apply.
- 9.2 Eight (8) races are scheduled. A minimum of three (3) races shall be completed to constitute the Series. One (1) worst score will be discarded after four (4) races are completed.
- 9.3 Abandoned races will not be resailed.