

# **Maritime**

## **Skippers Briefing 2019**

Middle Harbour Yacht Club

**Rianna James**  
Boating Safety Officer  
&  
**Jesse Porter**  
Boating Safety Officer



# Agenda

---

1. Lifejacket wear rules (tenders)
2. Inflatable lifejackets
3. Mandatory safety equipment
4. Correct navigation lighting
5. Rules & regs – sailing events
6. Incident reporting
7. Expired flare disposal

# Lifejacket Wear Rules

## Tenders

Boating activity/ Vessel type	Enclosed waters Lifejacket requirements
Children under 12 years of age	Level 50S or greater: <ul style="list-style-type: none"><li>• At all times on a vessel less than 4.8m</li><li>• When in an open area of a vessel less than 8m that is underway.</li></ul>
On all boats <b>less than 4.8m</b> (unless specified)	Level 50S or greater at all times when: <ul style="list-style-type: none"><li>• Boating between sunset and sunrise</li><li>• Boating on alpine waters</li><li>• Boating alone (without an accompanying person 12 years of age or more).</li></ul>



**WEAR A LIFEJACKET**  
**DON'T RISK YOUR LIFE**





# Inflatable Lifejackets

## Pre-wear

Gas cylinder (& auto-firing canister) screwed in



Keep cord free



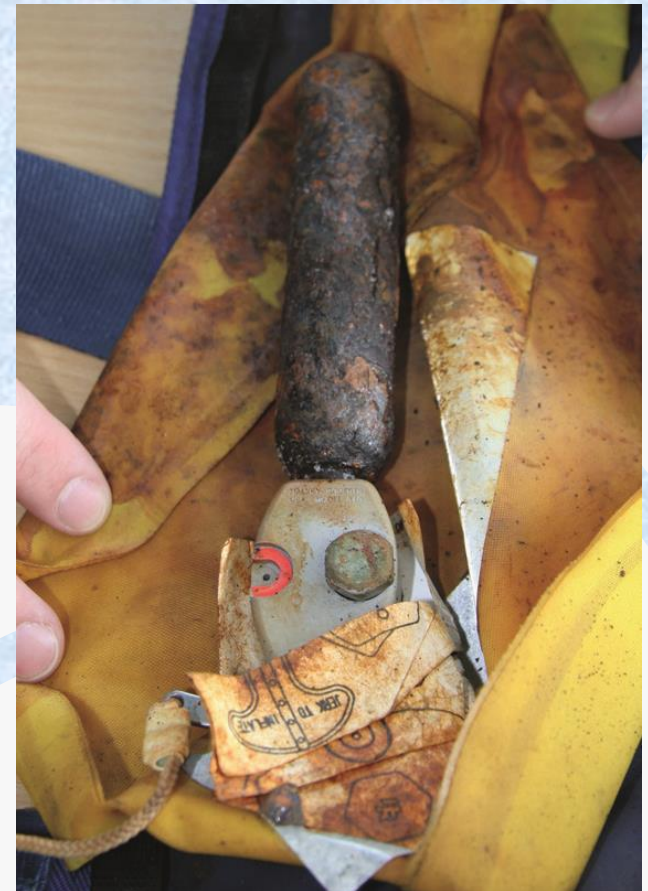


# Inflatable Lifejackets

## Annual Servicing

**Inflatable lifejackets must be serviced according to the manufacturers instructions and service records kept.**

1. Can it be self-serviced?
2. Visual inspection of exterior
3. Visual inspection of interior
4. Weigh gas canister
5. Ensure firing pin is functioning
6. Check expiry on auto-inflate canister
7. Manually inflate with mouth piece
8. Document







# Inflatable Lifejackets

## Self-Servicing Clinics

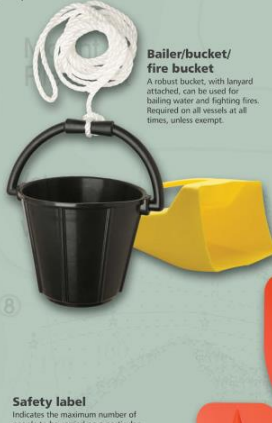
### Check Transport NSW Website

- Free
- BYO lifejacket
- Spare parts provided (where needed)
- \$15 voucher at participating retailers



# Minimum Safety Equipment

## Enclosed waters



**Safety label**  
Indicates the maximum number of people to be carried on a particular vessel and must be displayed on all powered vessels except PVC. Available for vessels under 6m, over 6m and those with flybridges.



## Open (ocean) waters

In addition to enclosed waters equipment

### Compass

A navigational instrument which shows direction relative to magnetic North and is required by all vessels operating offshore. The compass must have a rotating card and be liquid damped.



### Distress flares

Orange smoke hand-held flares for use during the day and red hand-held flares for use at night, are used to signal that you are in trouble. At least two orange smoke and two red hand-held flares must be carried on all vessels operating in open (ocean) waters and must be in date.

### V Sheet

A fluorescent orange-red coloured sheet (1.5m x 1.2m minimum) that can be spread over the deck or flown as a flag to indicate that you are in trouble. Is required to be carried by all vessels operating in open (ocean) waters.



### Water

Two litres of fresh drinking water per person must be carried by all vessels operating in open (ocean) waters in case of an emergency.



### Map/chart

A clearly legible (paper or electronic) chart/map of the area proposed for the vessel's voyage or excursion showing significant features for navigation such as shoals, reefs, hazards and channels is required on all vessels operating in open (ocean) waters.

## Open (ocean) waters 2 nautical miles from shore

In addition to enclosed and open waters equipment

### Marine radio

A communication device that allows contact with other vessels and shore stations for weather, navigation hazards and distress calls. Compulsory for all vessels operating more than two nautical miles from shore.

For more information talk to a Boating Education Officer or visit [rms.nsw.gov.au/maritime](http://rms.nsw.gov.au/maritime).



### Emergency Position Indicating Radio Beacon (EPIRB)

A locating device that emits a 406MHz signal that can be detected by satellites and aircraft when you are in trouble. Compulsory for all vessels operating more than two nautical miles from shore, must be in date (according to the manufacturer's expiry date) and registered with AMSA.



**Tenders (if operating in enclosed waters, less than 3m in length and operating within 200m of the shore)**

**Exempt from carrying other safety equipment if the vessel carries a paddle or oars, a waterproof torch if operating between sunset and sunrise, a bucket/bailer or bilge pump.**



**BE BRIGHT  
AT NIGHT**



# Navigation Lights

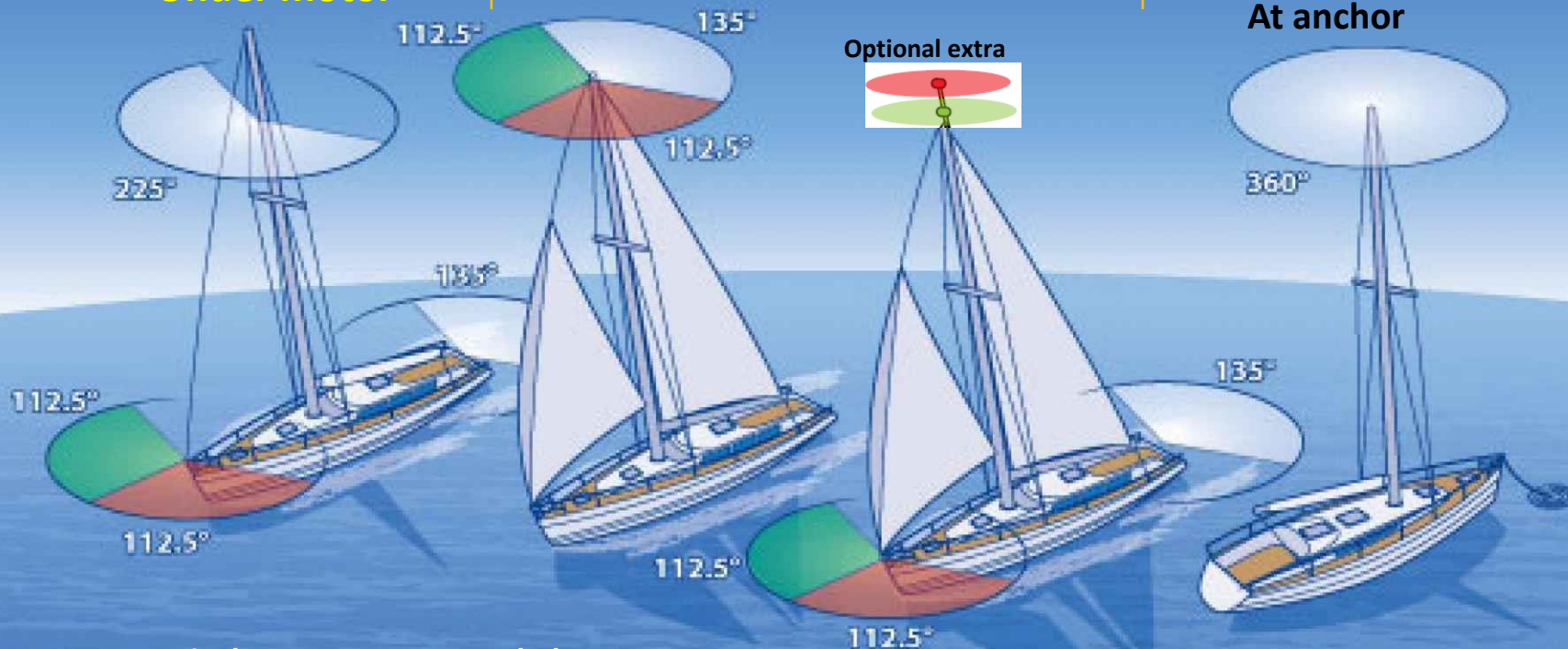
**BE BRIGHT  
AT NIGHT**



**Under sail**

**Under motor**

**At anchor**



- Tricolour not recommended
- Not compliant for vessels under motor - steaming light must be a minimum of 1m above sidelights (COLREGS Annex 1 Rule 2 (d)(h))

Use a torch to illuminate sails in busy areas or when another vessel seen approaching





# Rules & Regs

## Sailing Events



# Racing Rules

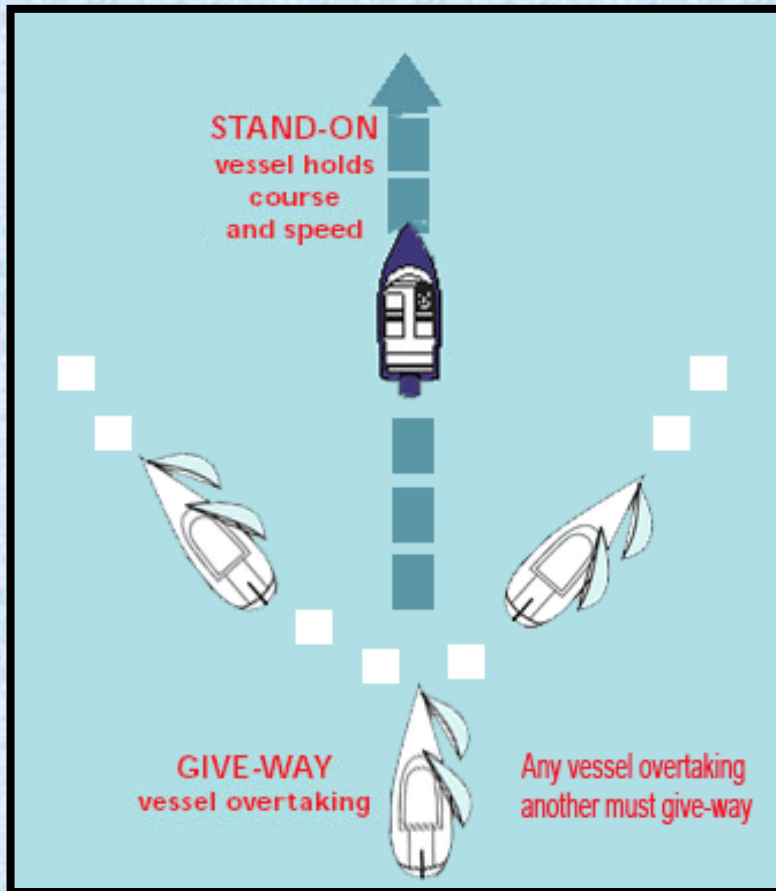
## 1. Interaction with other competing vessels:

- Australian Sailing Racing Rules of Sailing

## 2. Interaction with non competing vessels:

- International Regulations for the Prevention of Collisions at Sea 1972 (COLREGS).

# COLREGS Rule 13 - Overtaking



(a)

Any vessel overtaking any other shall keep out of the way of the vessel being overtaken

(d)

Any subsequent alteration of the bearing between the two vessels shall not make the overtaking vessel a crossing vessel or relieve her of the duty of keeping clear of the overtaken vessel until she is finally past and clear.



# COLREGS Rule 9 – Narrow Channels

---

**(b)**

A vessel of less than 20 metres in length or a sailing vessel shall not impede the passage of a vessel which can safely navigate only within a narrow channel or fairway.

**i.e. KEEP CLEAR OF LARGE VESSELS!**

# COLREGS Rule 18: NSW Special Rule

## Orange Diamond - Priority over sail signal

(2) The operator of a sailing vessel must keep out of the way of, and keep a safe distance from, a vessel displaying a priority over sail signal.





# STEER CLEAR



## of Big Ships and Ferries Event Condition

Before heading out check the Daily Vessel Movements on the Sydney Ports website:  
[www.sydneyports.com.au](http://www.sydneyports.com.au)

- ✓ Listen to the safety broadcast from Sydney Ports' 24/7 Vessel Traffic Service (VTS) centre on VHF Channel 13 for details of vessel movements
- ✓ Monitor VHF Channel 13 for position reports from vessels
- ✓ Always keep a lookout for seagoing ships and **STEER CLEAR** of them

- ✗ **DO NOT** pass between the escort vessel and the seagoing ship
- ✗ **DO NOT** pass within 30 metres of the side or stern of a seagoing ship
- ✗ **DO NOT** anchor in a channel or fairway
- ✗ **DO NOT** block a channel or fairway

24 HOUR HARBOUR OPERATIONS  
**VHF CHANNEL 13**

Do not pass between  
escort vessel and  
seagoing ship



Escort vessel  
identified by  
Red and Blue  
Flashing lights.



### 1. Big ship

- Keep **500m** from bow,
- **30m** from sides & stern
- Do not pass between pilot vessel and ship

### 2. Ferries

- Keep **200m** from bow,
- **30m** from sides & stern

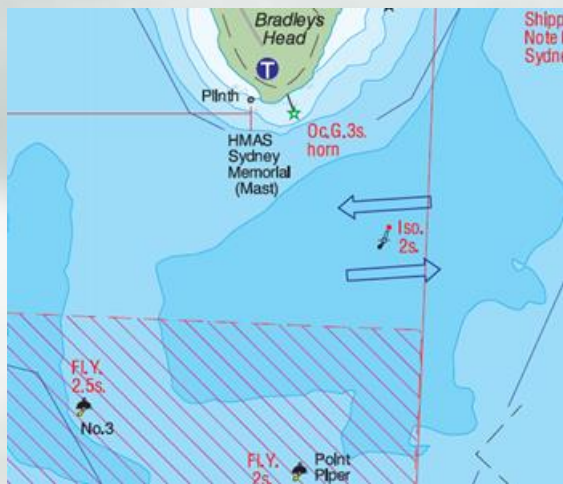


# Responsibilities between vessels

---

If you are under motor (including motor sailing) you are a **power-driven vessel**

# ADDITIONAL CONDITIONS: SAILING EVENTS



**Safe Water Mark**  
**Leave to Port**



“...or if that is not practicable participants must maintain a safe distance from other vessels”.



# ADDITIONAL CONDITIONS: SAILING EVENTS

**Do not navigate between moorings whilst competing**





# Incident Reporting

---

## All incidents

- Advise club Sailing Officer

## Significant incidents

(i.e. incident has resulted in death or injury to a person resulting in admittance to hospital; significant damage to a vessel (>10% value) or other property; damage or risk to the environment)

- Advise RMS

Complete Vessel Incident Report Form

<http://www.rms.nsw.gov.au/maritime/safety-rules/incidents-emergencies/incident-reporting.html>

# Go Easy on the Drink



**The Permissible Concentration of Alcohol (PCA) on the water is the same as for the road:**

Commercial Vessel Operator	under 0.02
Recreational Vessel Operators (under 18 years)	0.00
Recreational Vessel Operators (18 years and over)	under 0.05

# Expired Flare Disposal

**Attend designated drop off locations and times**

---

Sydney (early December & mid-January)

**Rose Bay: 7 Dec & 19 Jan**



Find finalised schedule:

<http://www.rms.nsw.gov.au/maritime/safety-rules/safety-equipment/flare-disposal.html>



# Any questions?

## Thank you!

